

PARASOLTM

RePelTM Finish



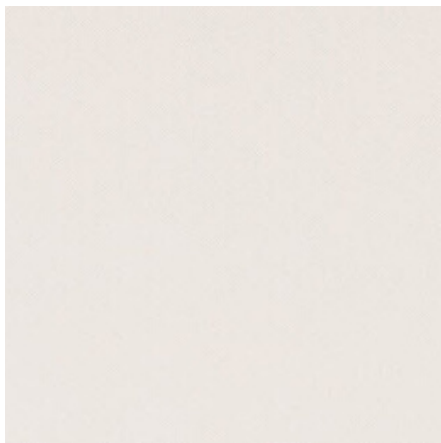
Specifications

Composition:	100% Vinyl [PVC]
Backing:	100% Polyester
Width:	54"
Repeat:	NA
Abrasion:	100,000 DR
Finish:	RePel
Roll Size:	40 Yards TM
Colorways:	24

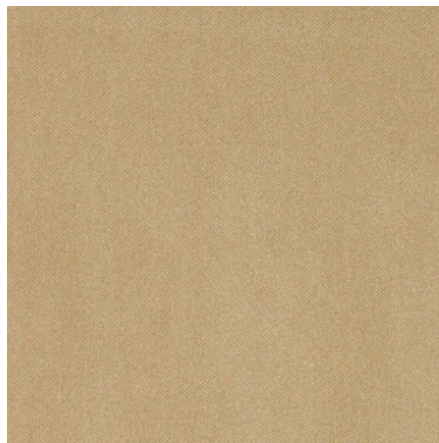
Flammability:

CA-117-2013
NFPA-260
UFAC Class 1

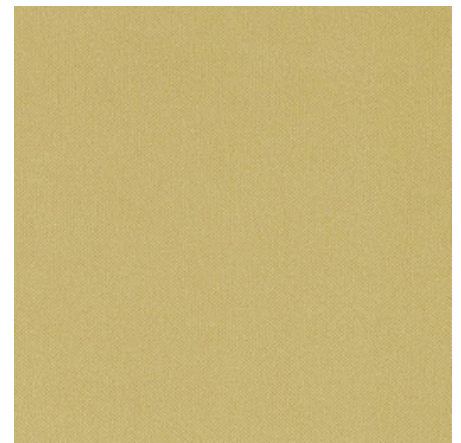
Pattern: Parasol



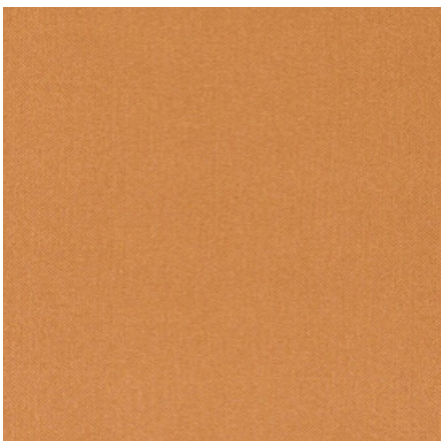
Chalk



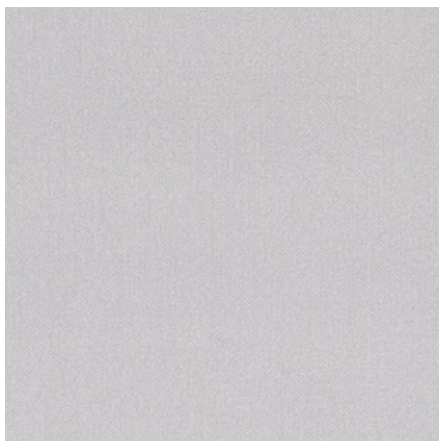
Khaki



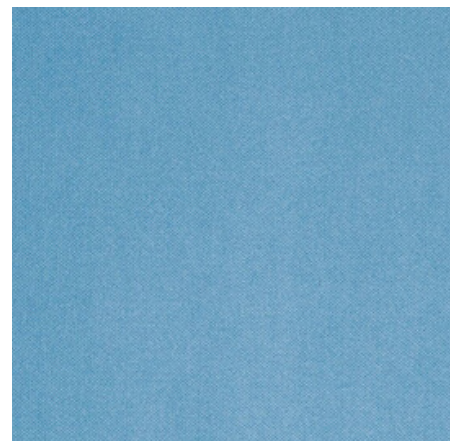
Moss



Tabacco



Dove Grey

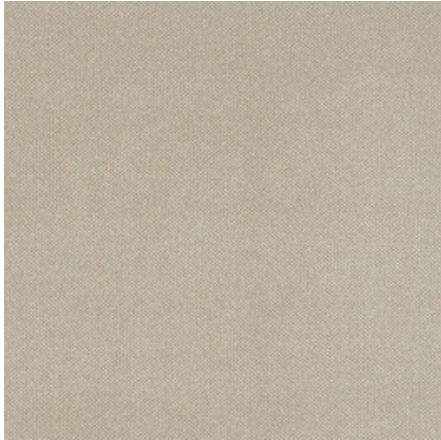


Admiral

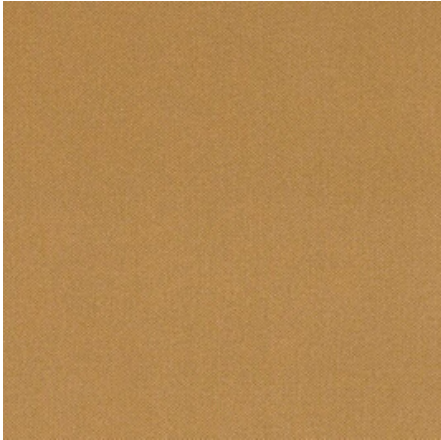


contract upholstery

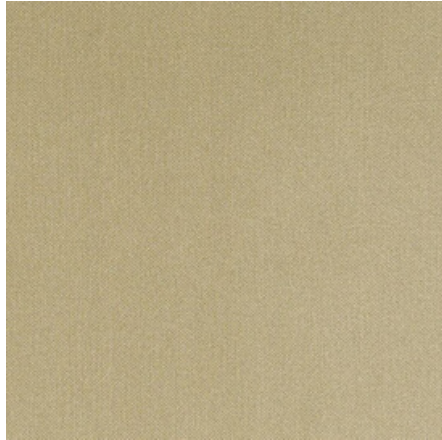
PARASOL™ RePel™ Finish



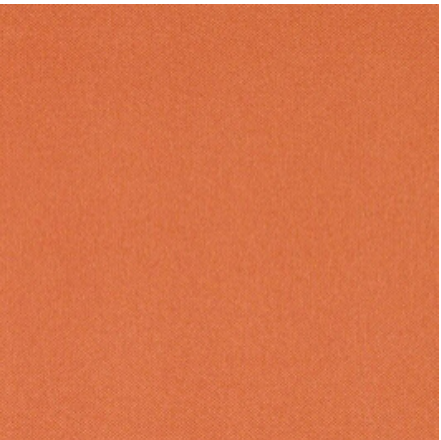
Mushroom



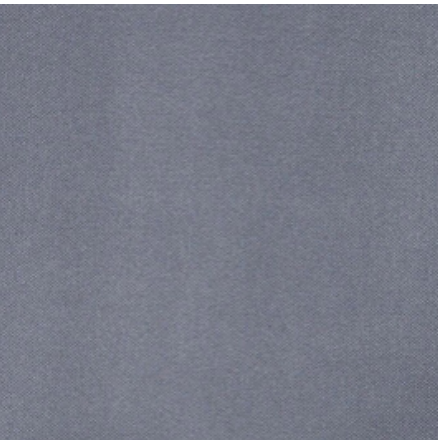
Camel



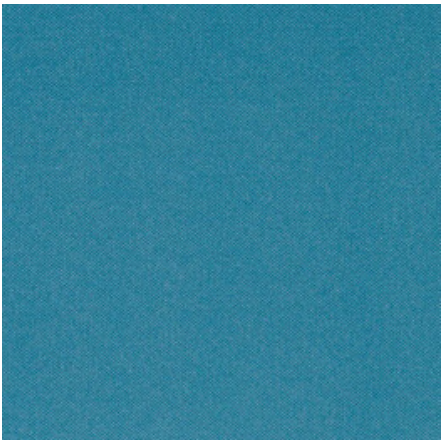
Cactus



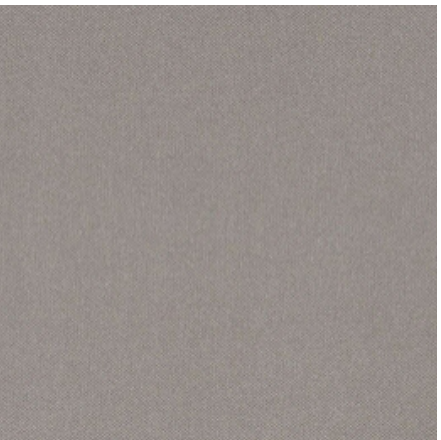
Tuscan



Storm



Lagoon



Shadow



Cocoa

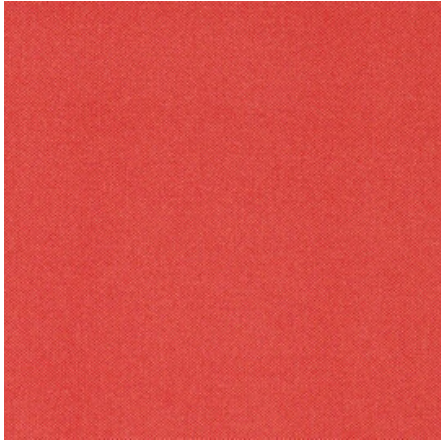


Basil

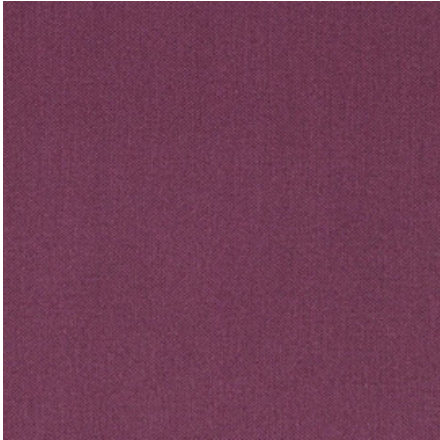


contract upholstery

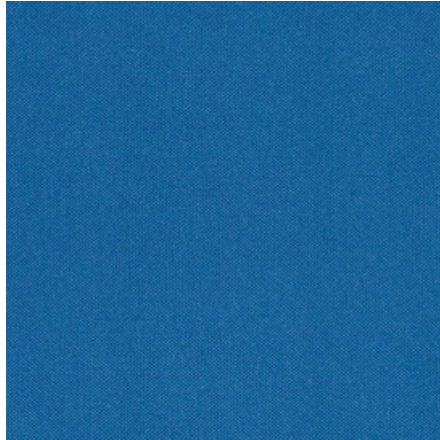
PARASOL™ RePel™ Finish



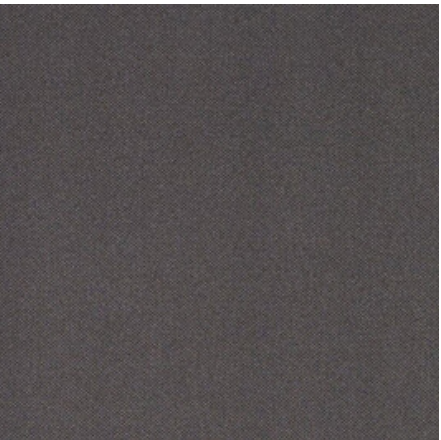
Grenadine



Iris



Denim



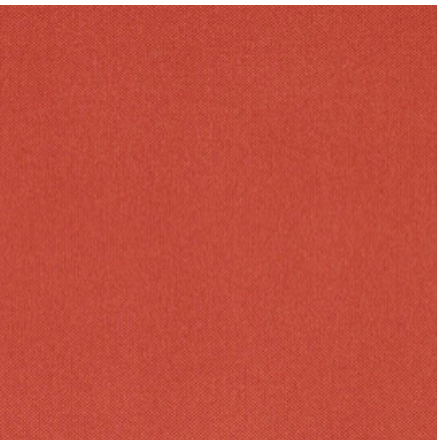
Carbon



Fudge



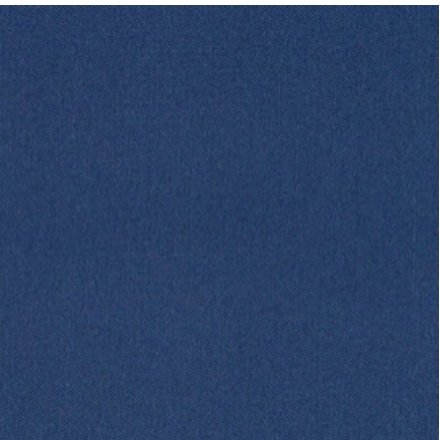
Eucalyptus



Tangelo



Raspberry



Blu Ink



contract upholstery

PARASOL™

RePel™ Finish

Specifications

General

Composition:

100% Vinyl Surface [PVC]

100% Reinforced Polyester Backing

Width:

54" / 123 Centimeters

Repeat:

No Repeat / NA

Railroad:

No

Roll Size:

40 Yards / Roll

Colors:

24 Colors

Eco Friendly

- Phthalate Free
- No FR Chemicals

Performance

Abrasion:

100,000+ DR [Wyzenbeek #10] ASTM 4157-07

UV Stability:

250 Hours | ASTM 4329-05

Soil / Stain Resistance:

RePel™

***See gmf website for more fabrics cleaning & care instructions**

Flammability

F/R Rating:

- CAL-1 17-2013 Section 1
- NFPA 260
- UFAC Class 1
- MVSS-302
- IMO Part 8, Section 3.1

Parasol™ when used with proper components may be compatible with CA-133



Bleach Cleanable

